



A Donald **BASIL** Company

# Life Science Solutions

The LYNX mission is to provide Animal Care Washing Systems of the highest standards, quality, and reliability in the industry. Our service and customer care will be unmatched

## Model 495LX Cage and Rack Washer

### APPLICATION:

The Cage and Rack Washer is a heavy duty, large capacity, hydro-spray washer designed for thorough, efficient cleaning of cages, racks, debris pans, and miscellaneous items used in the care of laboratory animals.

### STANDARD FEATURES:

- Modular Construction
- Knock-Down Shipment
- Oscillating Spray Jet System
- Personnel Safety Features
- Micro-Computer Control System
- Automatic Ten Phase Treatment Cycle
- Automatic Self-Cleaning Screen
- Temperature Guarantee
- Insulated Construction
- Incoming Utility Gauges
- Interior Illumination

### CONSTRUCTION:

- All Stainless Steel Construction
- Automatic Water Level Control
- 10 HP Treatment Pump
- Stainless Steel Steam Coil Heating
- Touch Screen Operator Interface
- Programmable Cycles
- Direct Reading Pump Pressure Gauge
- Double-Pane Glass Window

### ACCESSORIES:

- Floor Ramps
- Modular Walls
- Bottle Wash Cart
- Cage Wash Cart



### SIZE:

**Compartment:** 46" wide x 85" high x 92" long

**Overall Unit:** 86" wide x 100" high x 100" long

**Sump Height:** 6" high

**Note:** Washer can be designed to any size to meet new or existing applications. (Overall size may vary upon options chosen)

### OPTIONAL FEATURES:

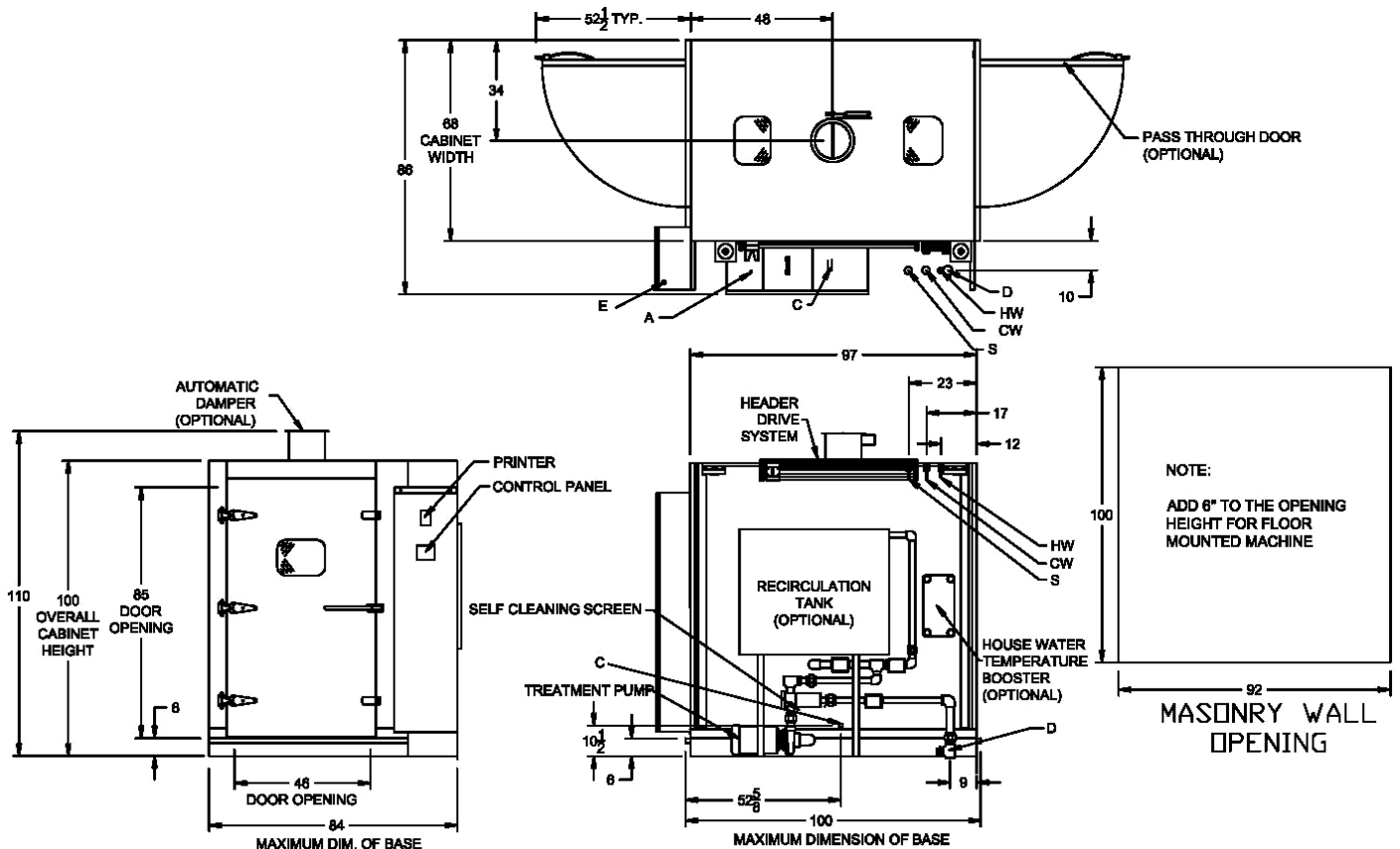
- Pass-Thru Unit
- Pit Mounted or Floor Mounted
- Right or Left Hand Services
- Re-usable Throwaway Alkaline and/or Acid Tanks
- S/S Recirculation Piping and Components
- House Hot Water Heat Exchanger
- Automatic Damper
- Exhaust Fan
- Drain Discharge Cool Down/Tank
- Feeder Bottle Washing System
- Pan Washing
- Automatic Watering Rack Flush System
- Pass-Thru Door Interlock System
- Air Compressor
- Seismic Tie Down
- Strip Chart Recorder
- Ethernet or RS-485 Data Port
- Modem
- Detergent Dispensing Systems
- pH Neutralization System
- **LYNX OPTI-Wash™ System**

**Make a Difference...Make it LYNX!**

## UTILITIES: 495LX

E	Electrical	3-60-208/230/460 V	10 Hp	
S	Steam	2" NPT	35-80 PSI	Dynamic $\pm$ 5 PSI 600 #/Hr Flow Rate 1200 #/Hr with Optional Hot Water Heat Exchanger
HW	Hot Water	1½" NPT	35 PSI	50 GPM @ 140°F $\pm$ 5°F 40 Gallon Sump Capacity
C	Condensate	1" NPT		
D	Drain	4" Floor Drain (Minimum)	120 GPM	Flow Rate @ 200°F
V	Vent	12" ID Duct	450 CFM	Saturated Vapor @ 190 °F
A	Air	½" NPT	100PSI	6 CFM Flow Rate
CW*	Cold Water	1½" NPT	35 PSI	60 GPM @ 50°F $\pm$ 5°F

\*CW – Required if drain discharge cool down package is ordered



### NOTE:

- The selection of certain options could reduce the above stated utilities. Please consult your LYNX representative to discuss your specific requirements.
- Drawing data is for general reference only. Each sized unit and selected options will effect the overall machine size. Obtain certified drawings for design and installation details.
- Specifications are subject to change without notice.